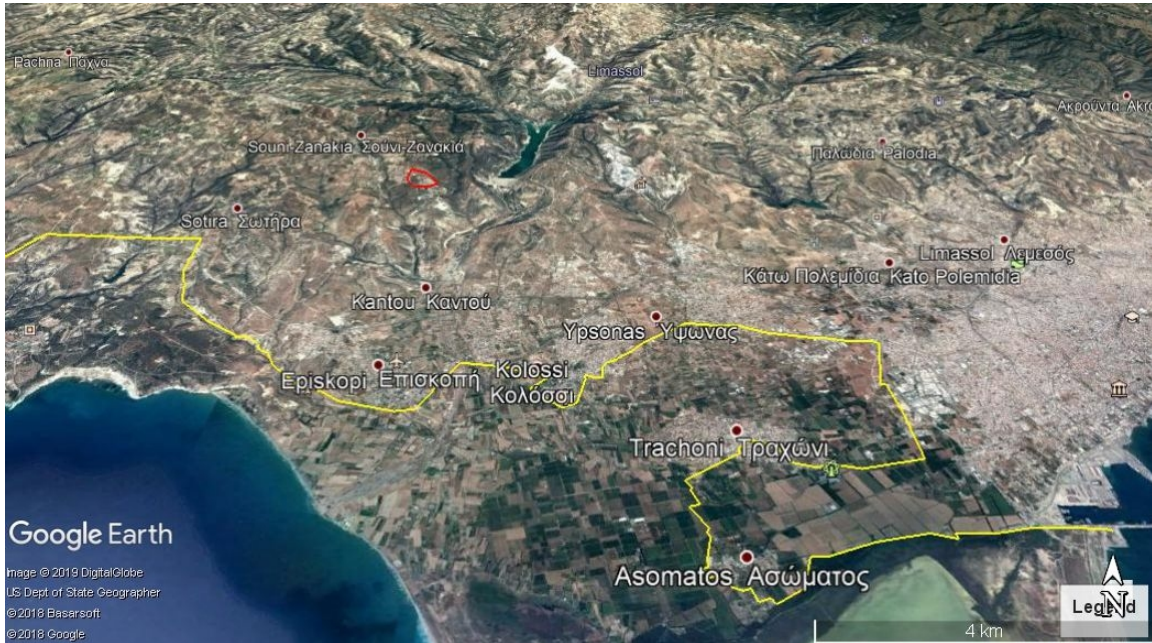


RASBERRY PROPERTIES

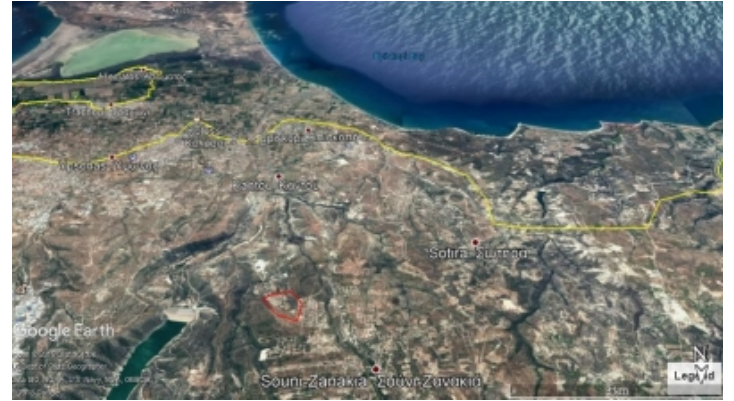


RESIDENTIAL PLOT FOR SALE IN SOUNI

📍 Limassol, Souni

#1354





Price	€95,000	Type	Building Plot
Plot	752 m ²	Area	Limassol, Souni

Description

The plot measures 752 sq. m,

Residential zone H6, has a building factor of 20%, a coverage of 20% and allowance for 2 floors (8,3 m height). It has access to public road, water and electricity. It is ready for build up and located in a prestigious residential area in Souni. It is perfect for building your dream house.

BUILDING FACTOR IS AT ONLY 20% BUT THERE IS A VERY GOOD LIKELY HOOD FOR THIS TO GO UP.

The price is NON NEGOTIABLE so only serious inquiries please!



Michalis Thomaides
Sales Manager.

✉ info@propertiesofcyprus.com

☎ (+357) 0035799656378

Features

Investment opportunity

Panoramic view

Distances

Amenities

500 m

Airport

70 km

Sea

7 km