

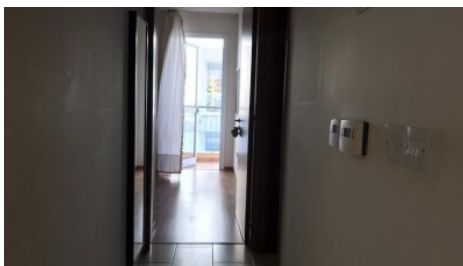
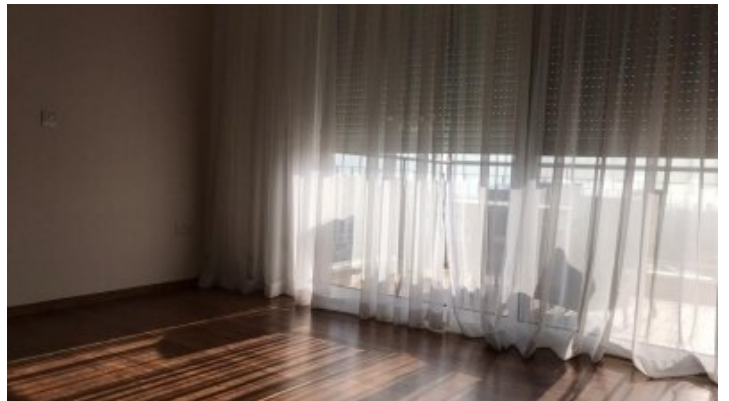
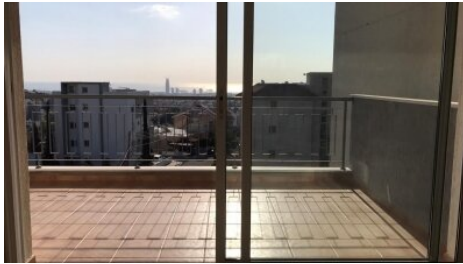


**3 bedroom renovated apt in Panthea Mesa  
Geitonia Limassol.**

 **Limassol, Panthea**

#1486





<b>Rent</b>	€1,500 /month	<b>Type</b>	Apartment
<b>Bedrooms</b>	3	<b>Bathrooms</b>	1
<b>Area</b>	Limassol, Panthea		

---

## Description

125m indoor area  
21m covered verandah  
8m uncovered verandah  
11m storage room at ground floor  
1 Covered Parking Space

The flat indoors consists of a Big Living Room/ Dining Room, Kitchen, 1 master bedroom with shower, 2 Bedrooms, 1 bathroom with bathtub.

Sea View from a hill  
Small building, 6 flats

### Furniture:

2 sofas with table  
2 buffet  
kitchen table with chairs  
verandah table with chairs

### Equipment:

tv in one room  
Pitsos extractor  
Miele Oven  
Neff Ceramic Hob  
Neff Fridge  
Pitsos Dishwasher  
Pitsos Tumble Dryer  
LG Microwave Oven

Minimum contract 1 year  
Deposit €3000



**Michalis Thomaides**  
Sales Manager.

✉ info@propertiesofcyprus.com  
☎ (+357) 0035799656378

## Facilities

Aircondition, Split system

Parking, Covered

Elevator

---

## Features

Bath

Easy access to highway

Balcony

Mountain view

Parquet flooring

Semi-solid parquet flooring

Double glazing

Panoramic view

Sea view

---

## Distances

**Amenities**

2 km

**Airport**

50 km

**Sea**

5 km

**Public Transport**

500 m

**Schools**

1 km